

CANVAS

HiFi Reinvented

Setup Guide



www.canvashifi.com



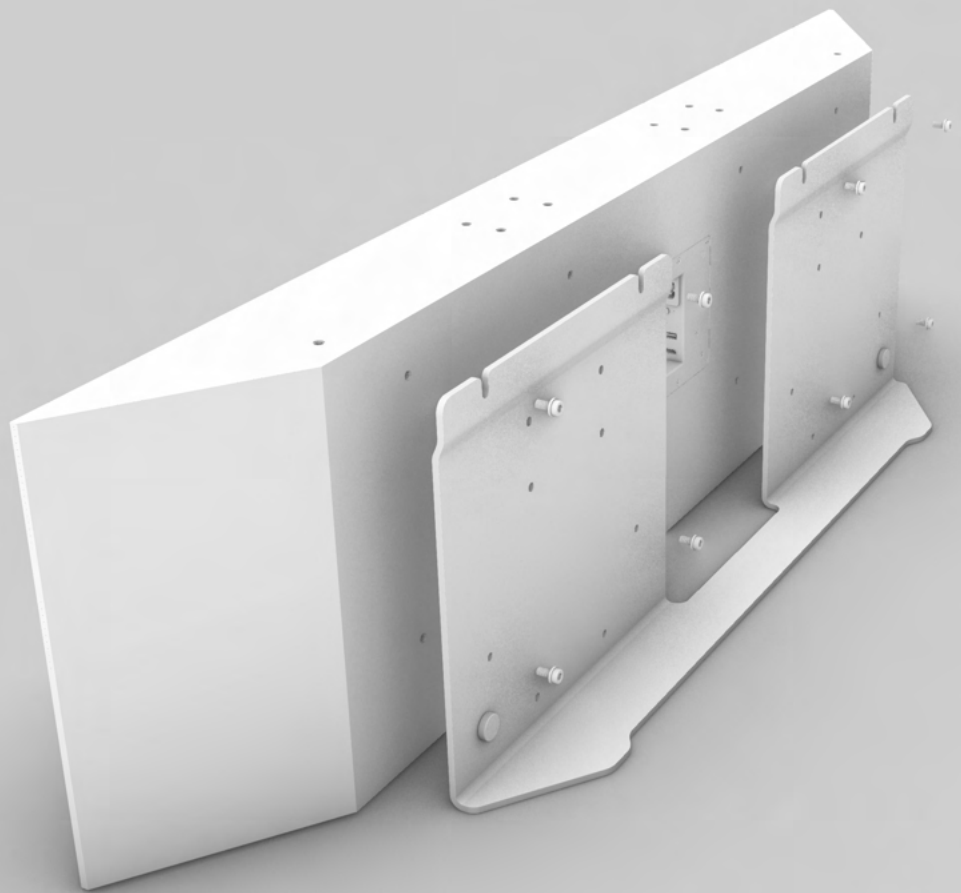
0045 2975 0045



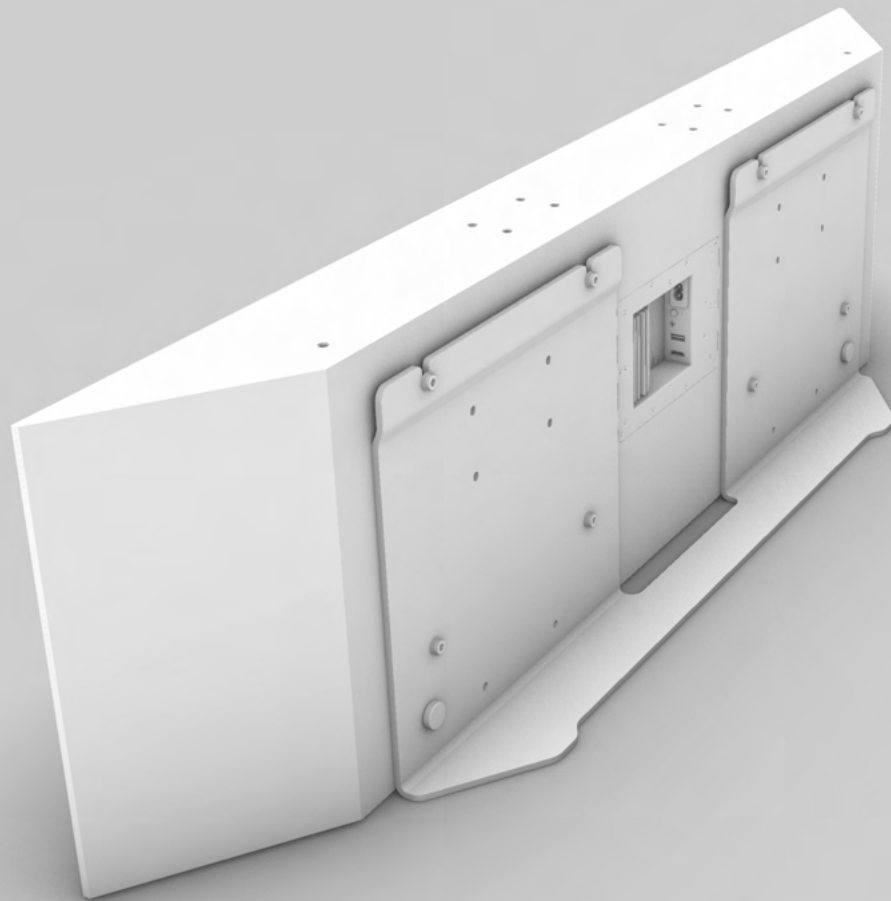
hello@canvashifi.com



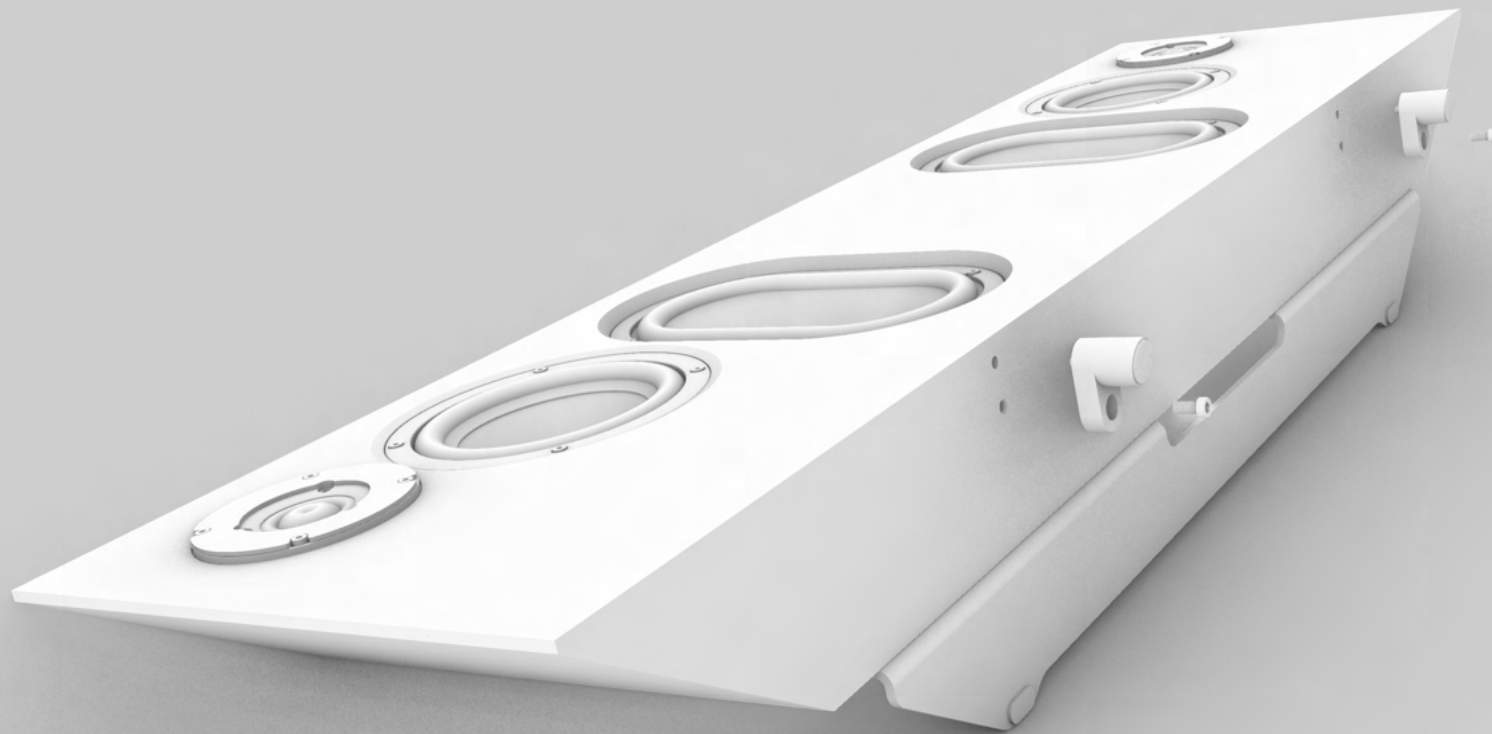
Maigaardsvej 2,
9900 Frederikshavn, Denmark



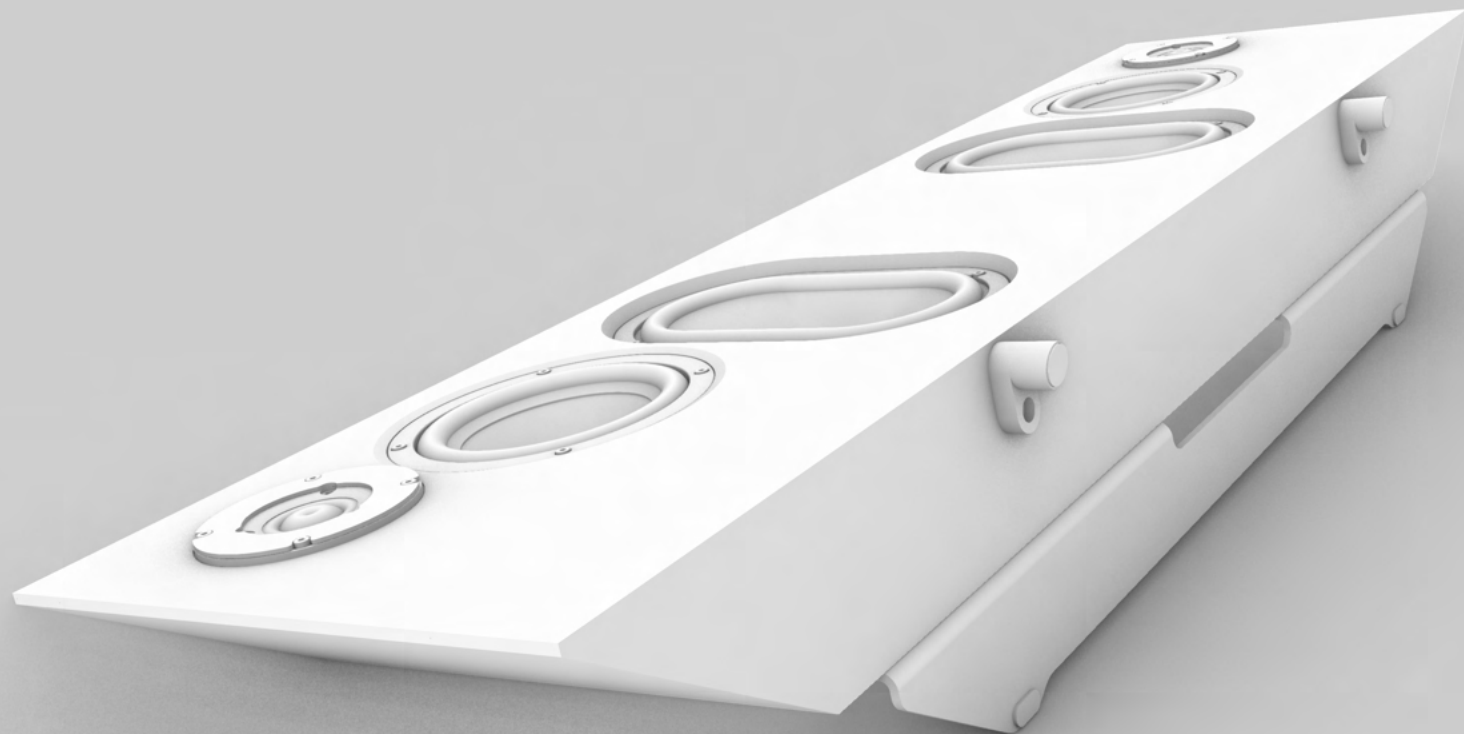
Mount Hybrid Foot / Wall
mount as back foot using
8xM6 screws.



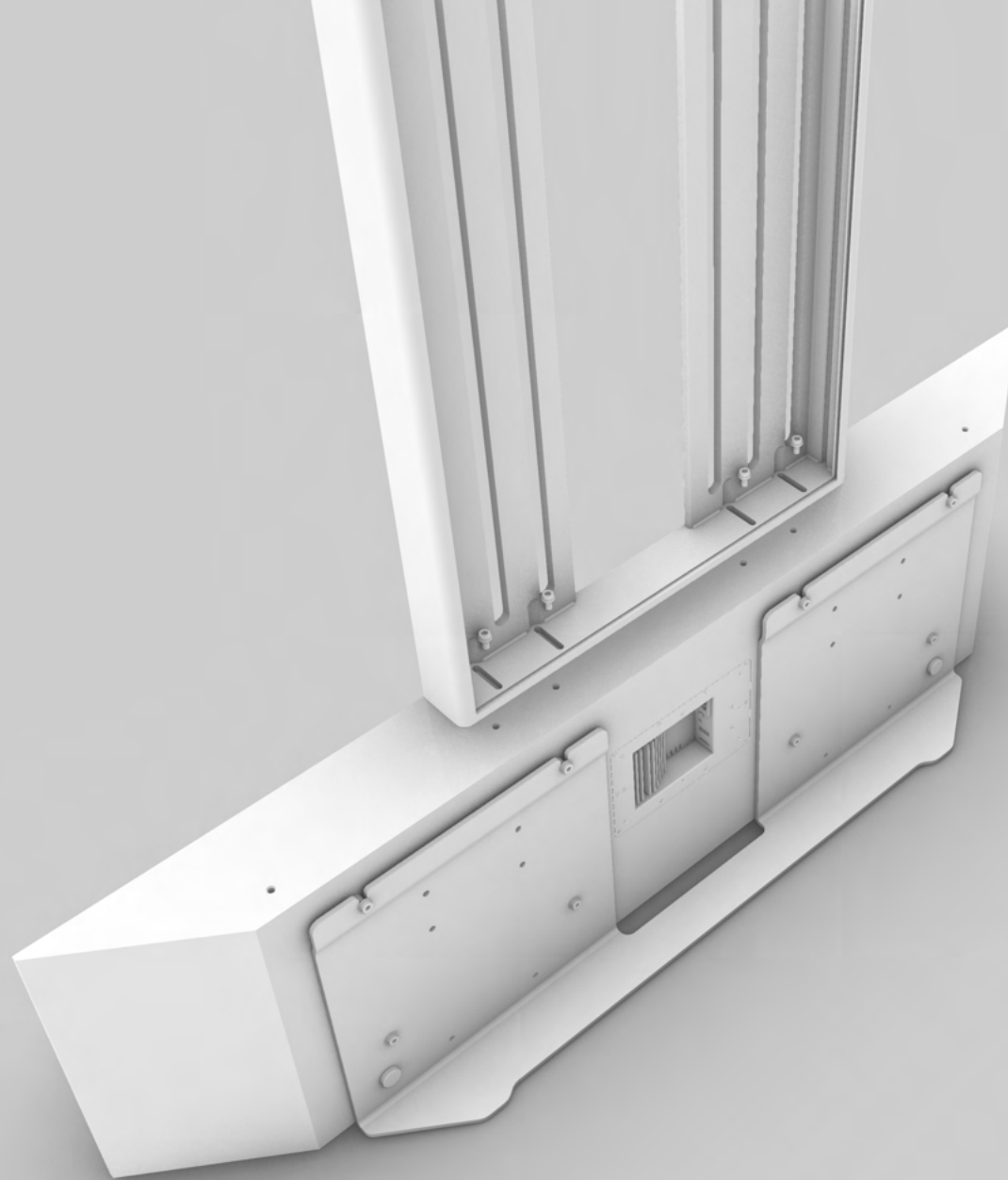
Mount Hybrid Foot / Wall
mount as back foot using
8xM6 screws.



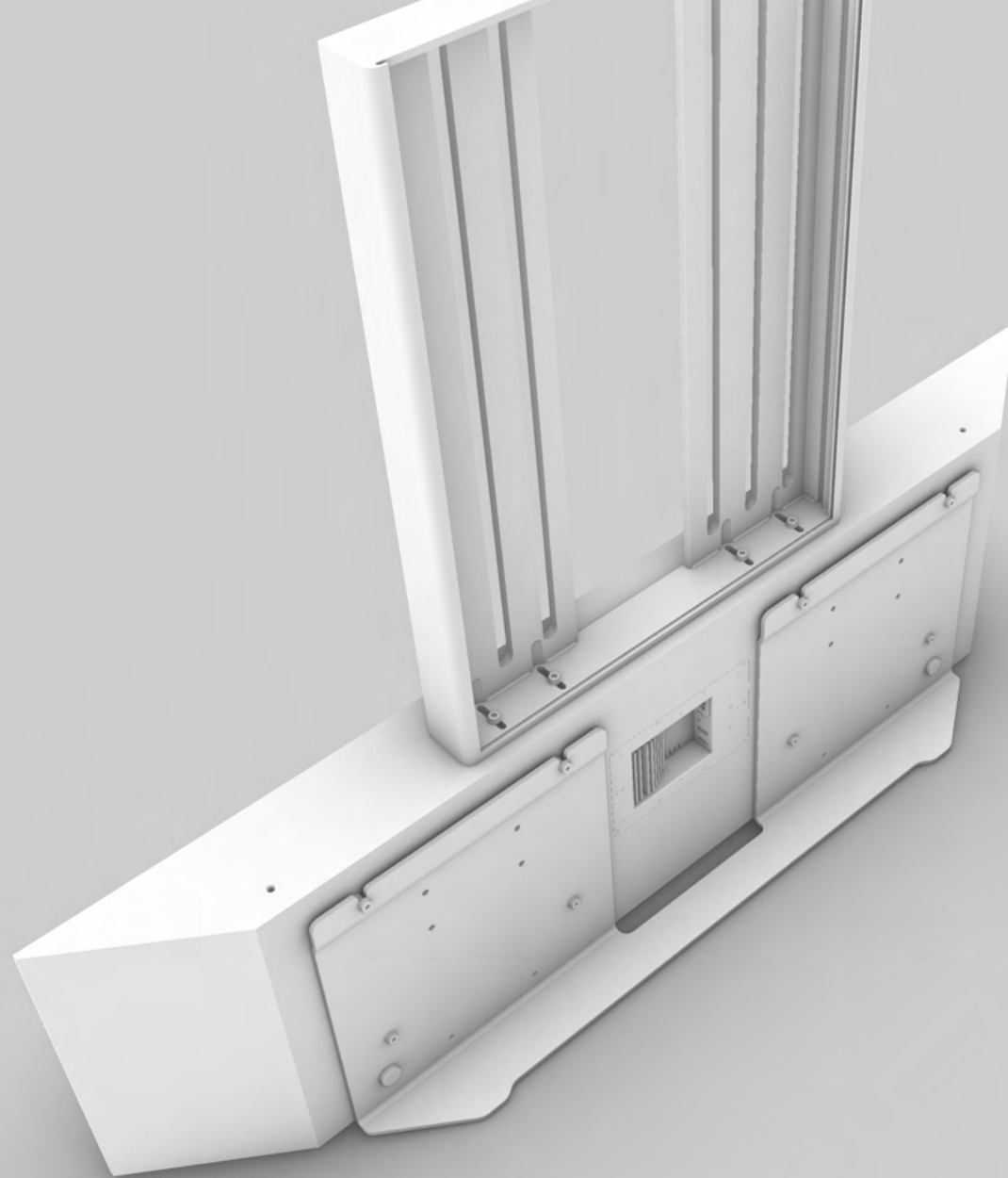
Lay speaker on the back and mount front feet using 2xM6 screws



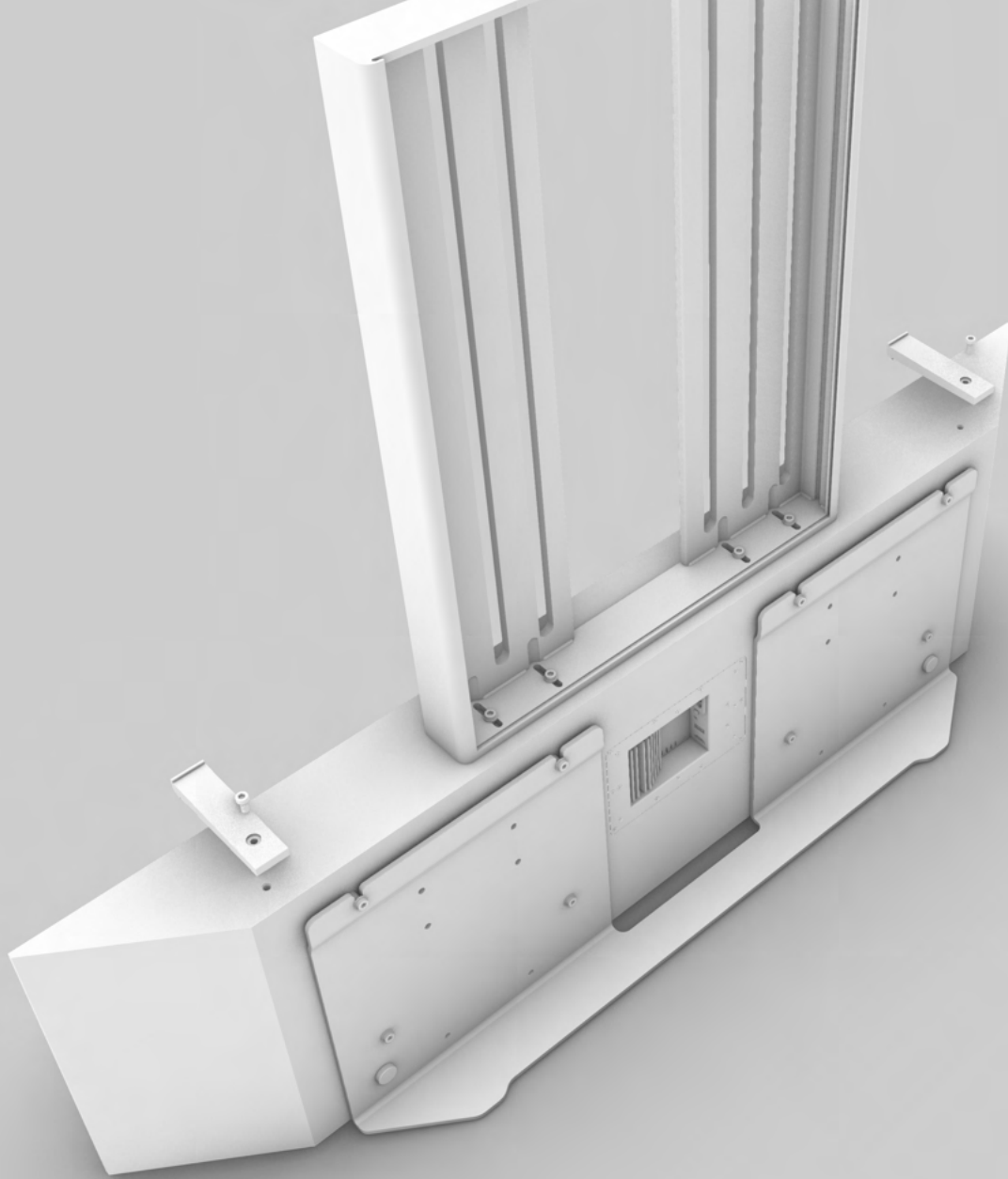
Lay speaker on the
back and mount front
feet using 2xM6 screws



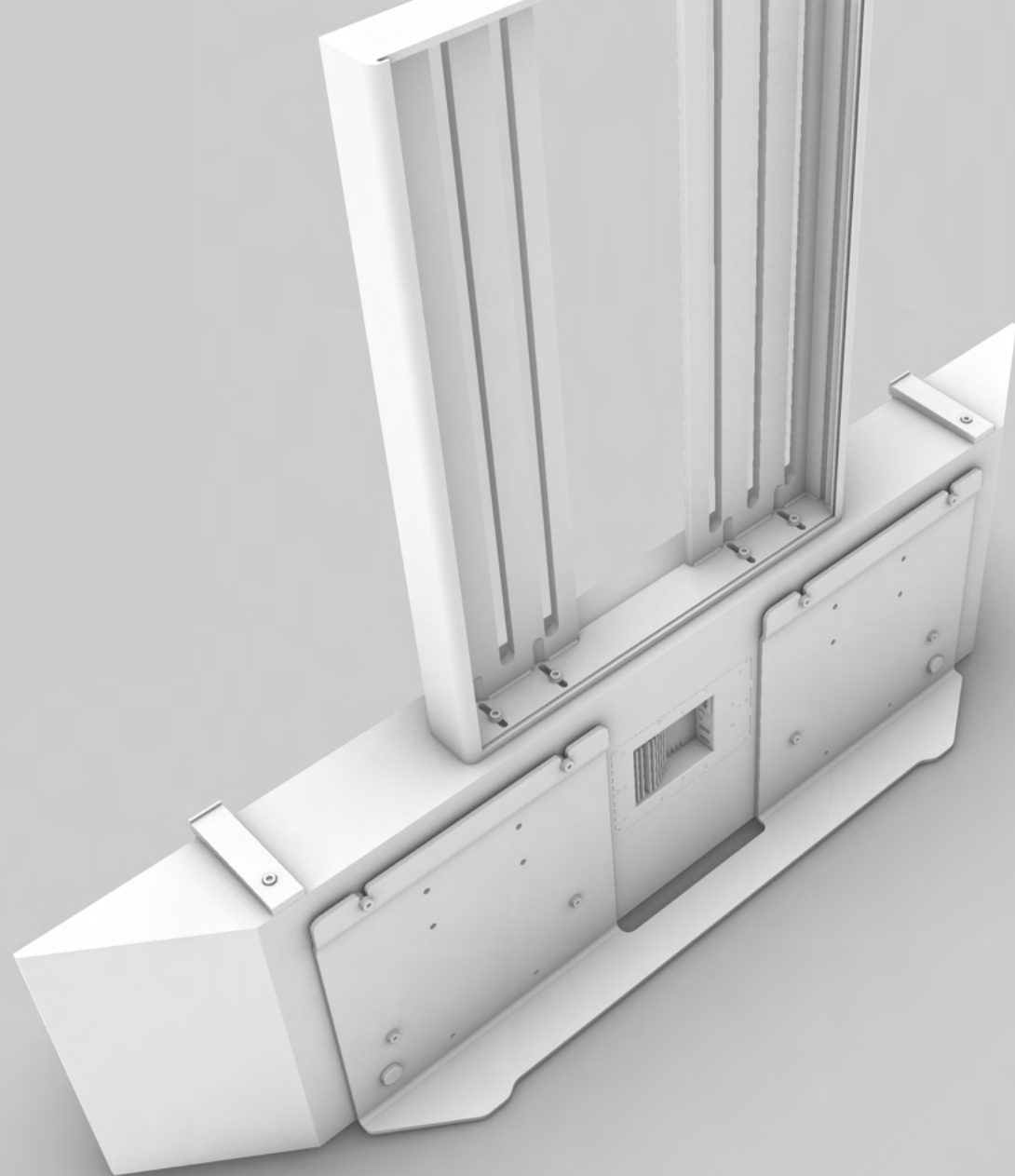
Mount Universal TV
Mount using 4xM6
screws. Set the depth of
the mount to match the
approximate depth of
your TV, + a few
millimeters.



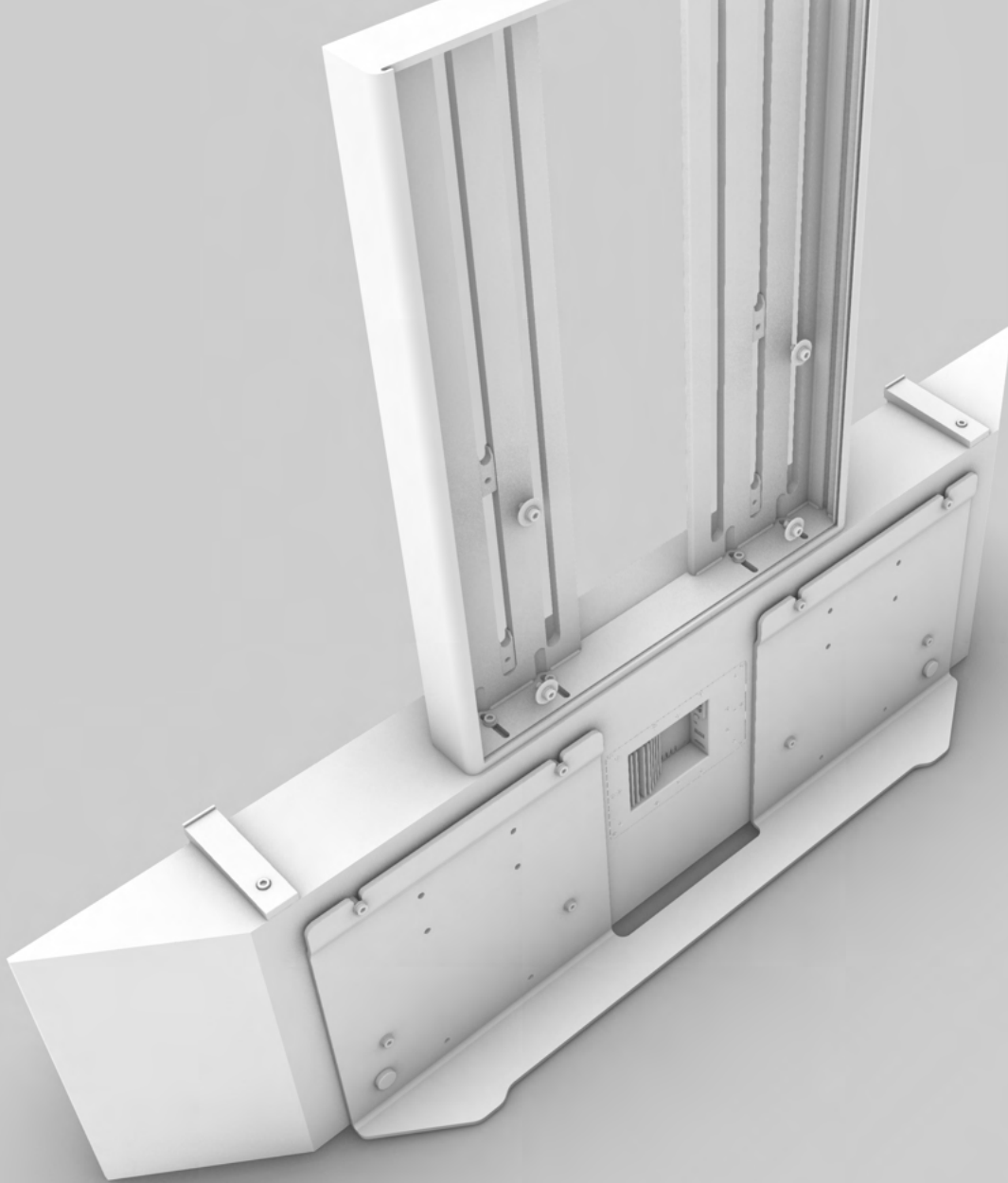
Mount Universal TV
Mount using 4xM6
screws. Set the depth of
the mount to match the
approximate depth of
your TV, + a few
millimeters.



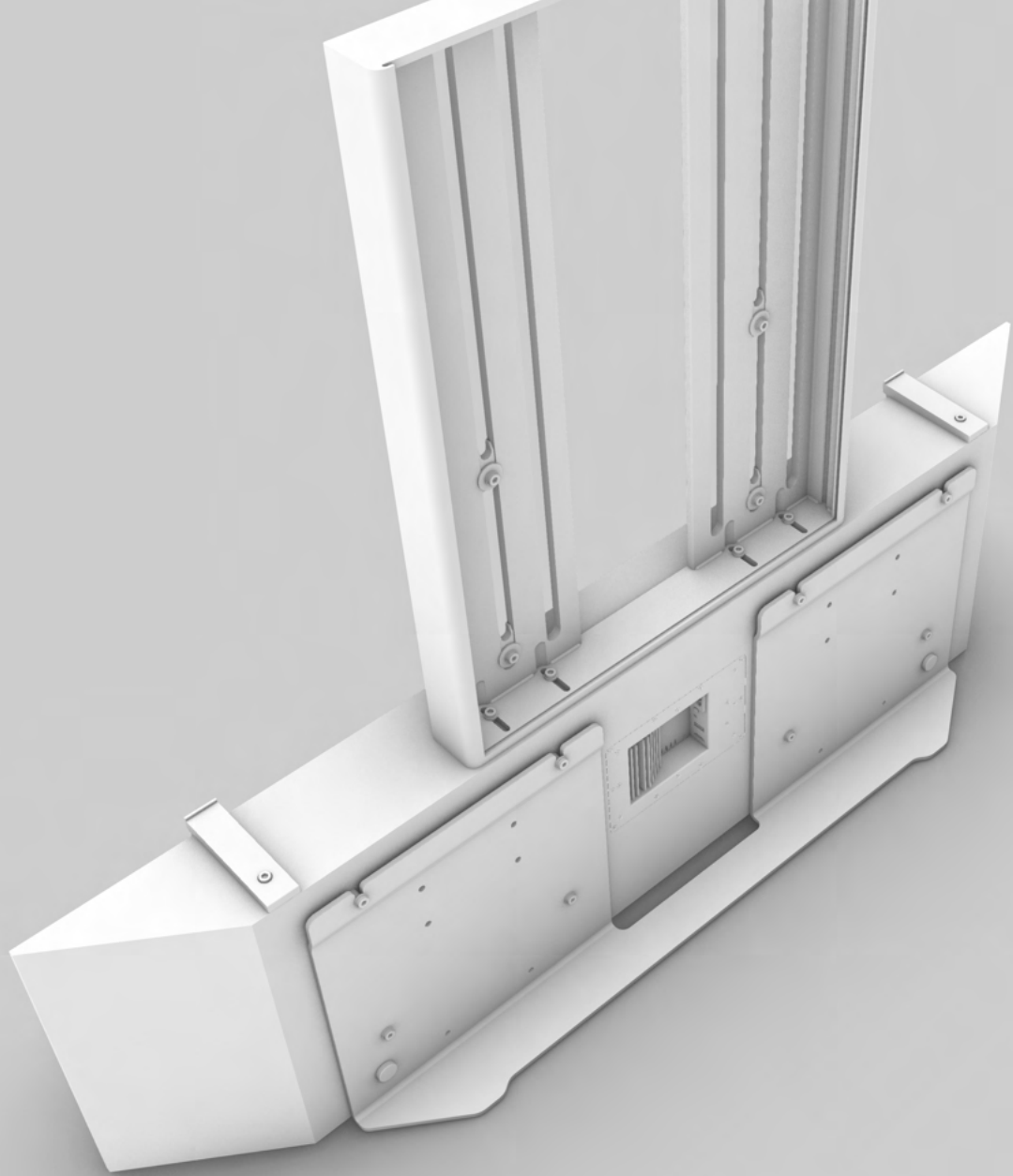
Mount TV height setting tools using 2xM6 screws.



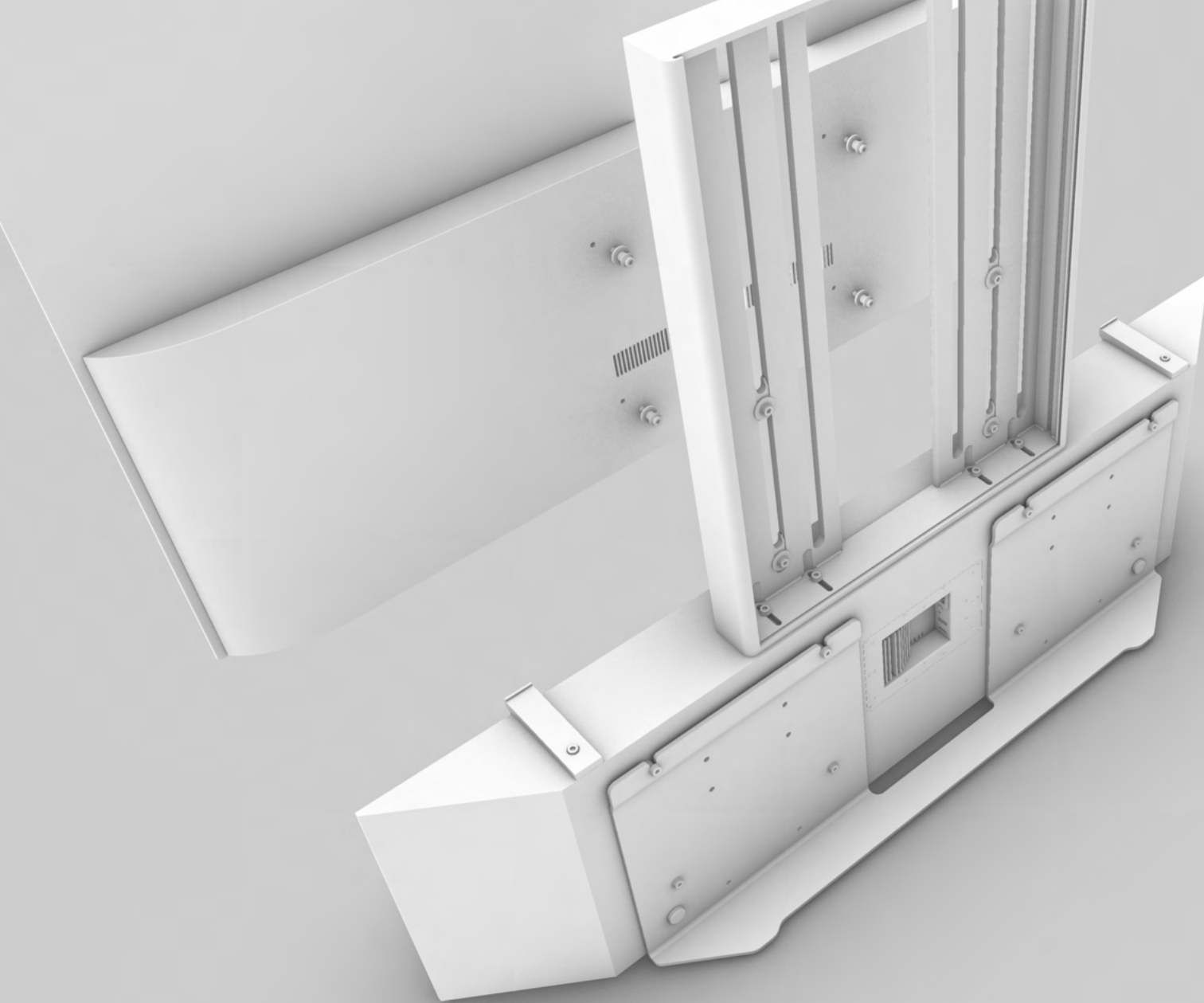
Mount TV height setting
tools using 2xM6 screws.



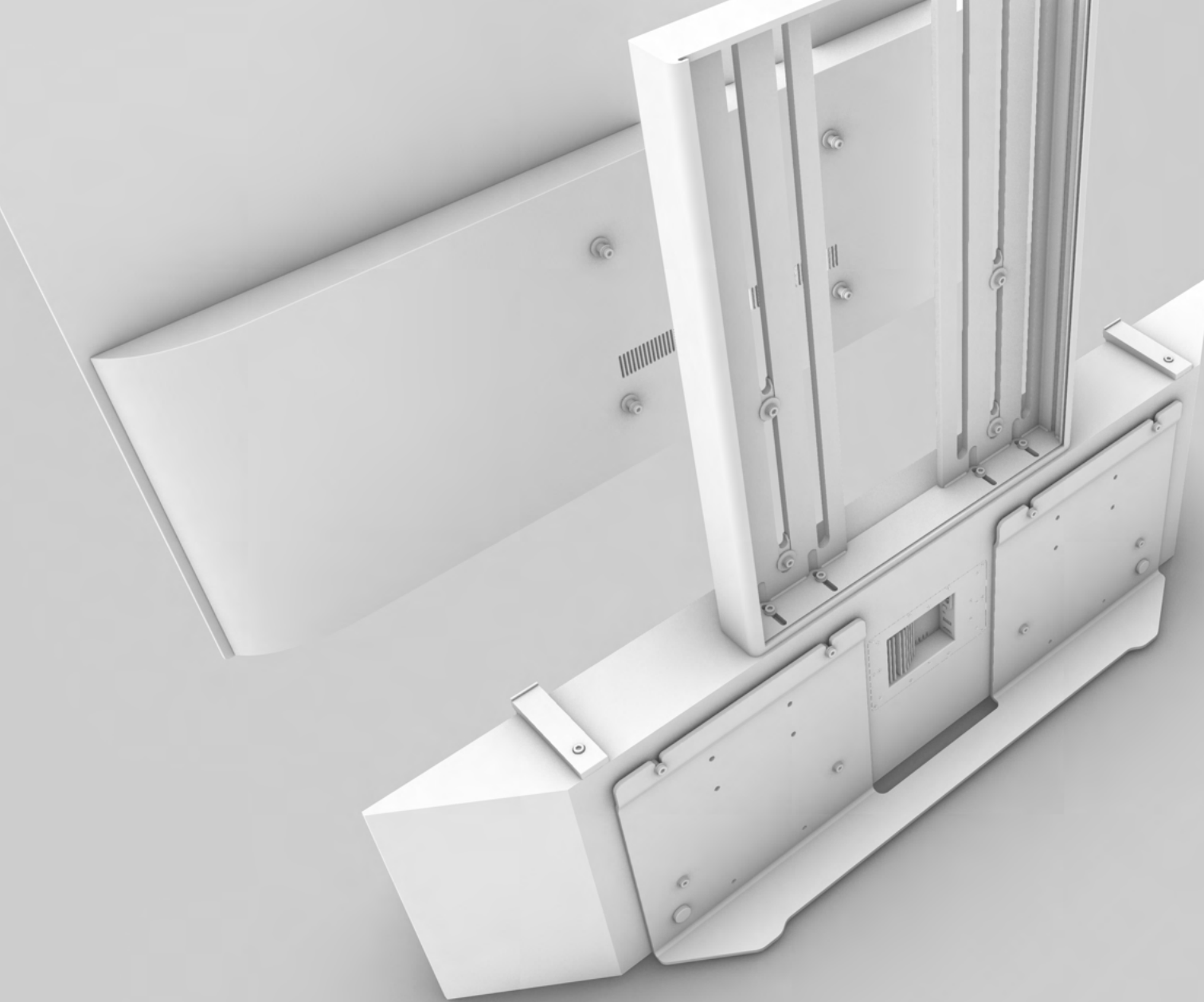
Mount 4x"VESA pin grappers" using 4xM6 screws. 2 pcs should be at the bottom of the TV mount, and 2 pcs approx between your TV's bottom and top VESA holes.



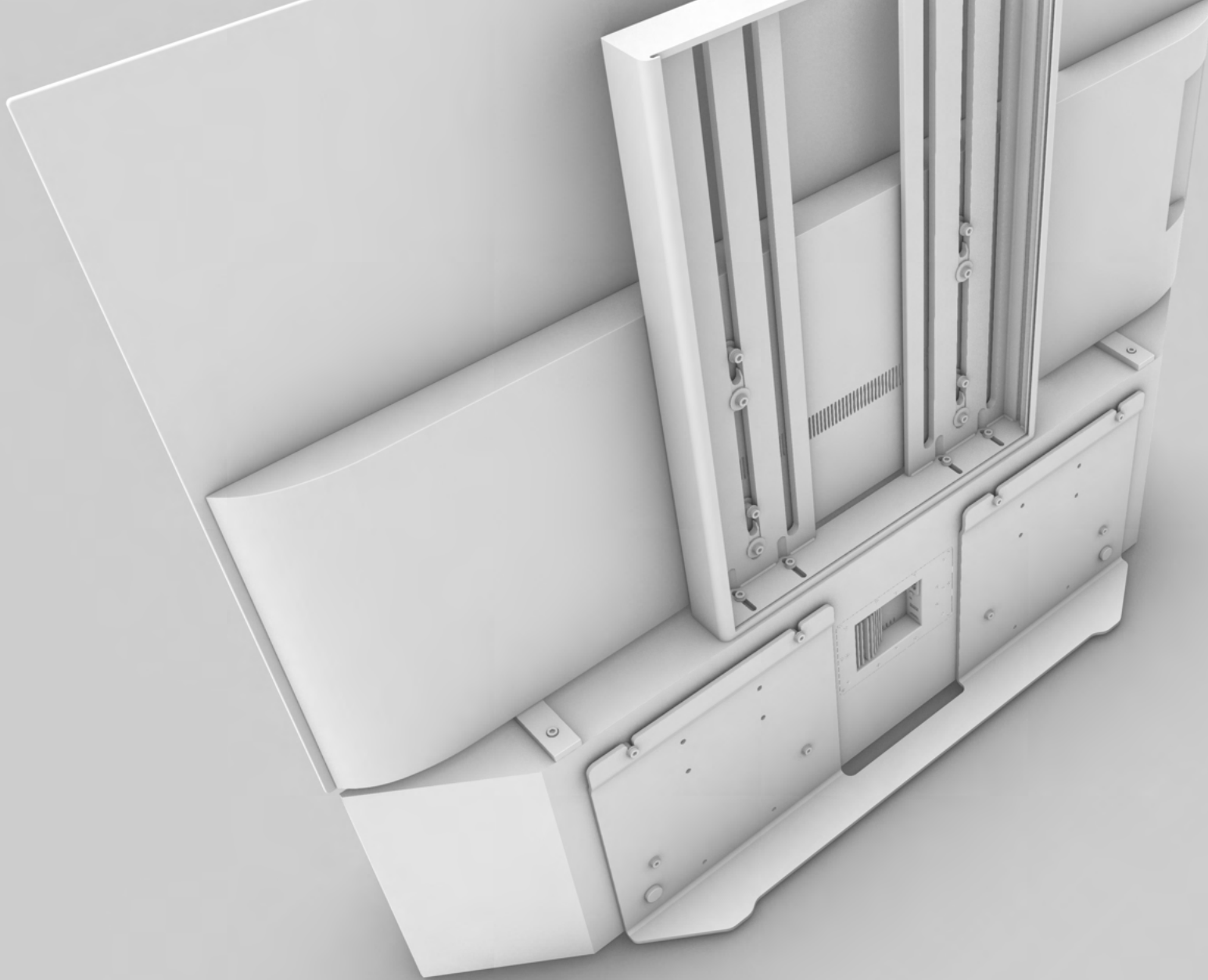
Mount 4x"VESA pin
grappers" using 4xM6
screws. 2 pcs should
be at the bottom of the
TV mount, and 2 pcs
approx between your
TV's bottom and top
VESA holes.



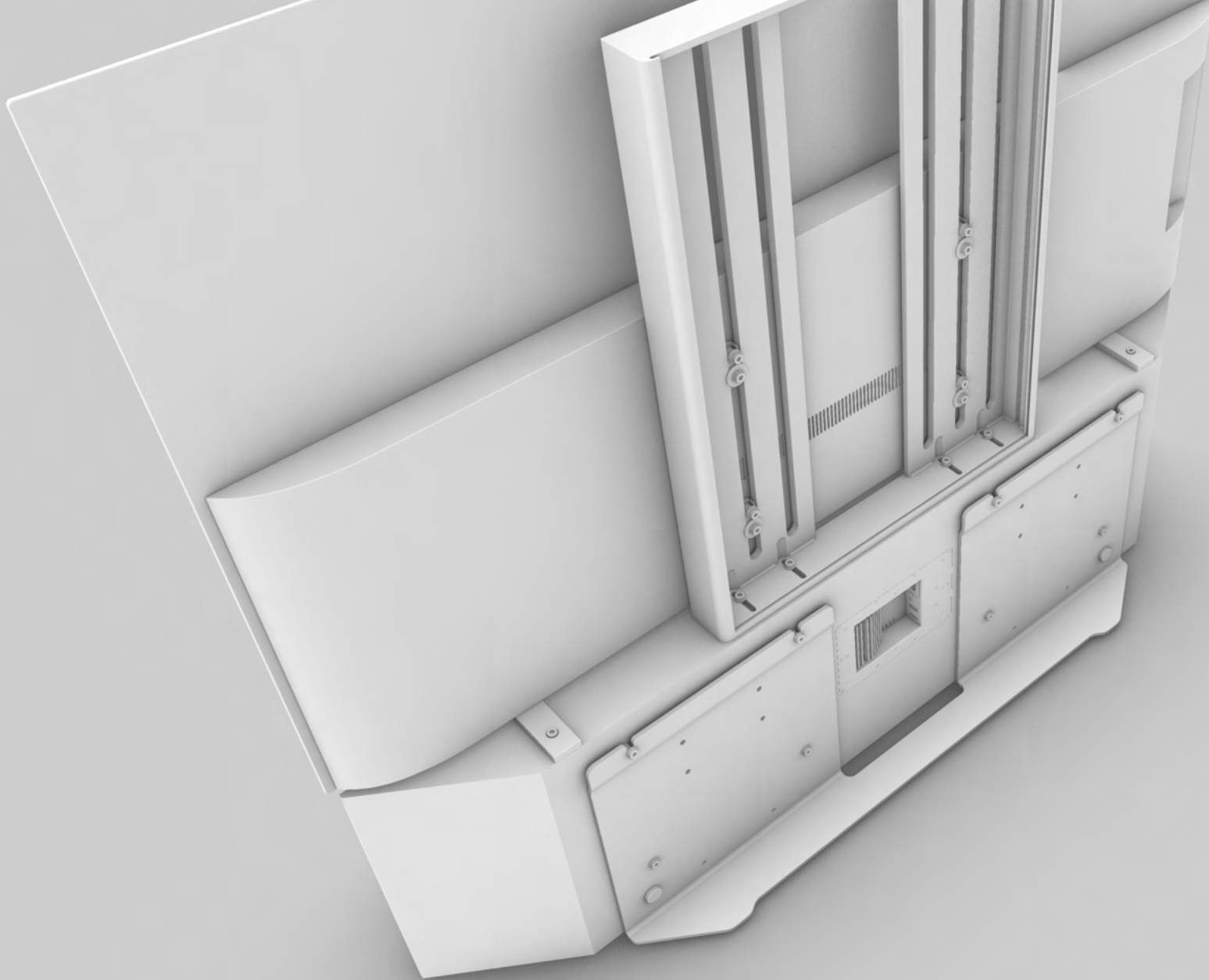
Mount 4x“VESA Pins” on your TV. Use 6mm versions if your TV use M6 VESA screws, 8mm if your TV use M8 VESA screws.



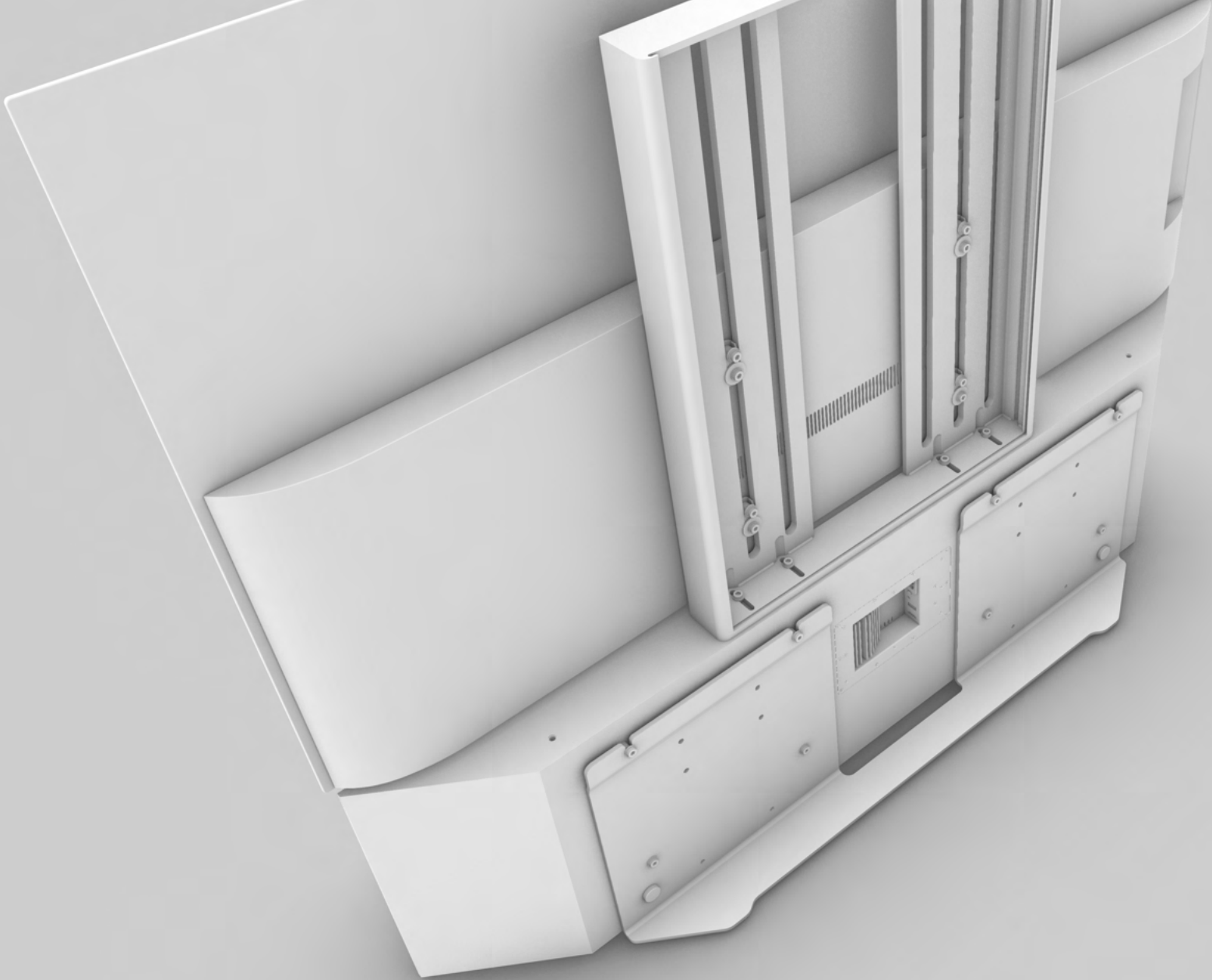
Mount 4x“VESA Pins” on your TV. Use 6mm versions if your TV use M6 VESA screws, 8mm if your TV use M8 VESA screws.



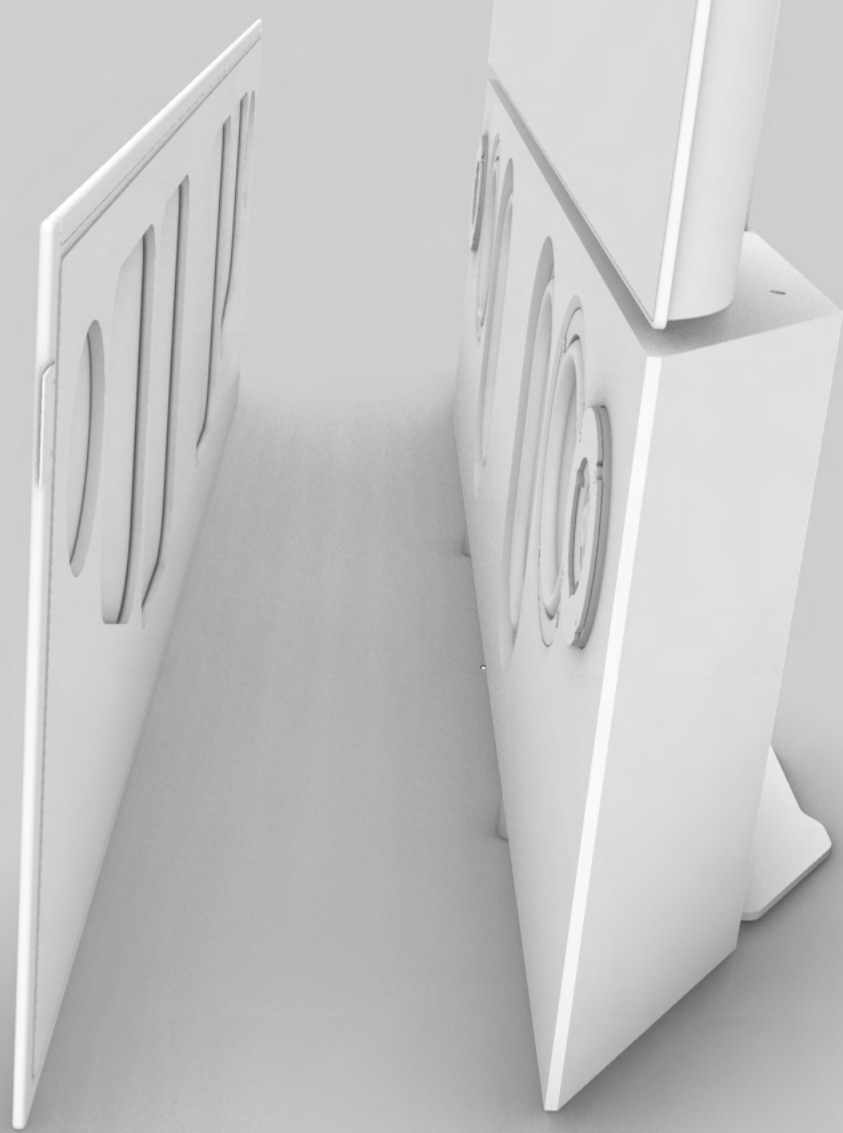
Move your TV to sit on
"TV height setting tools",
and rest it back against
the Universal TV Mount.



One by one, loosen "TV VESA pin grabbers" and push them up against the "VESA pins", tighten the screws firmly in place.



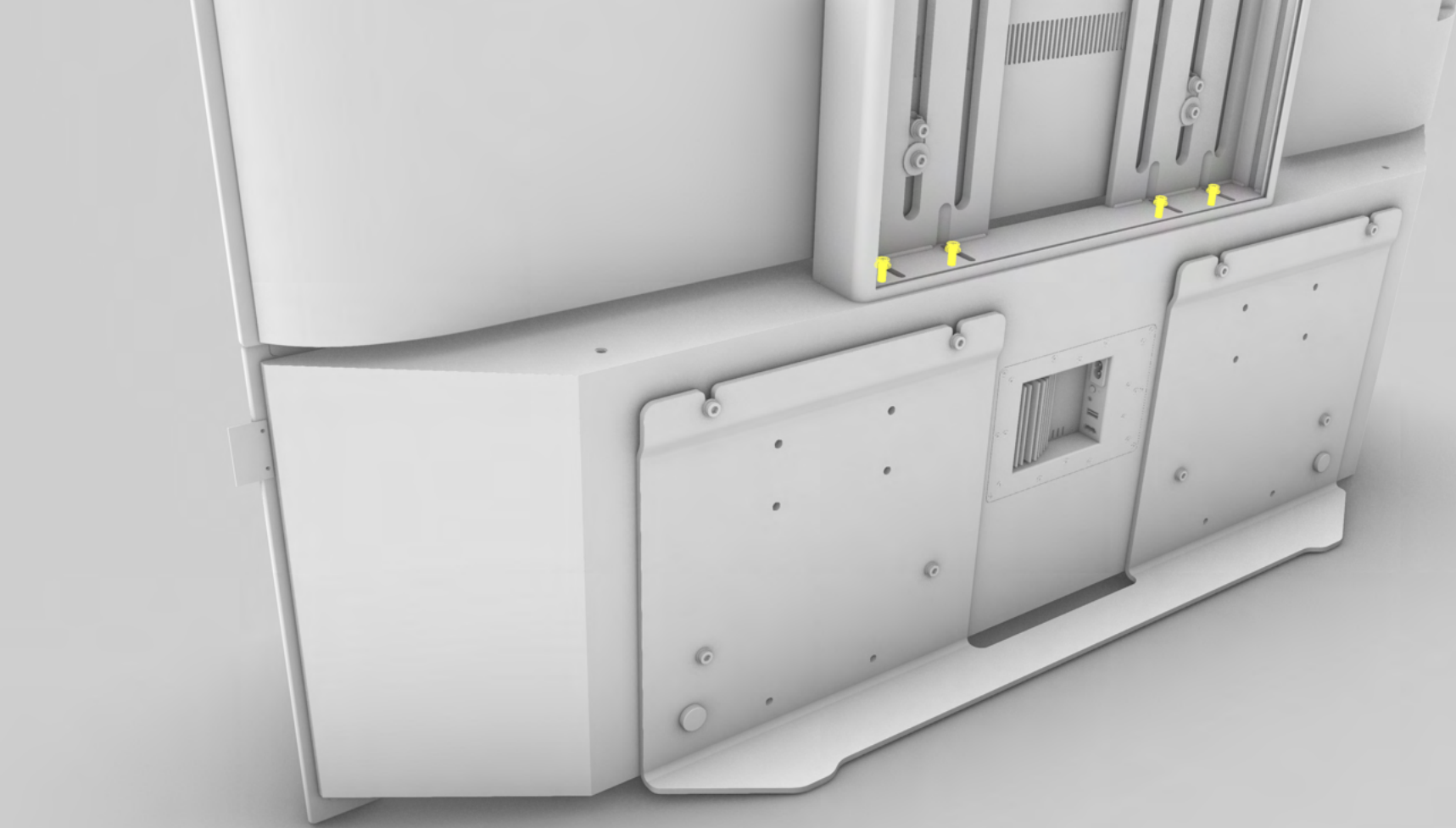
Remove "TV height
setting tools"



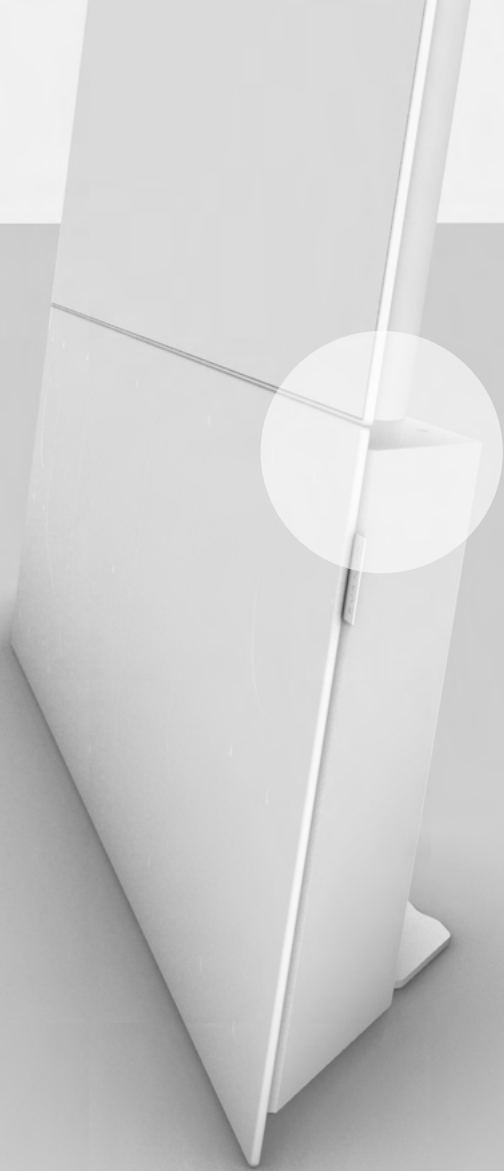
Mount speaker front grille.
It attaches firmly in place
using lots of neodymium
magnets, for easy
exchange with new colors.



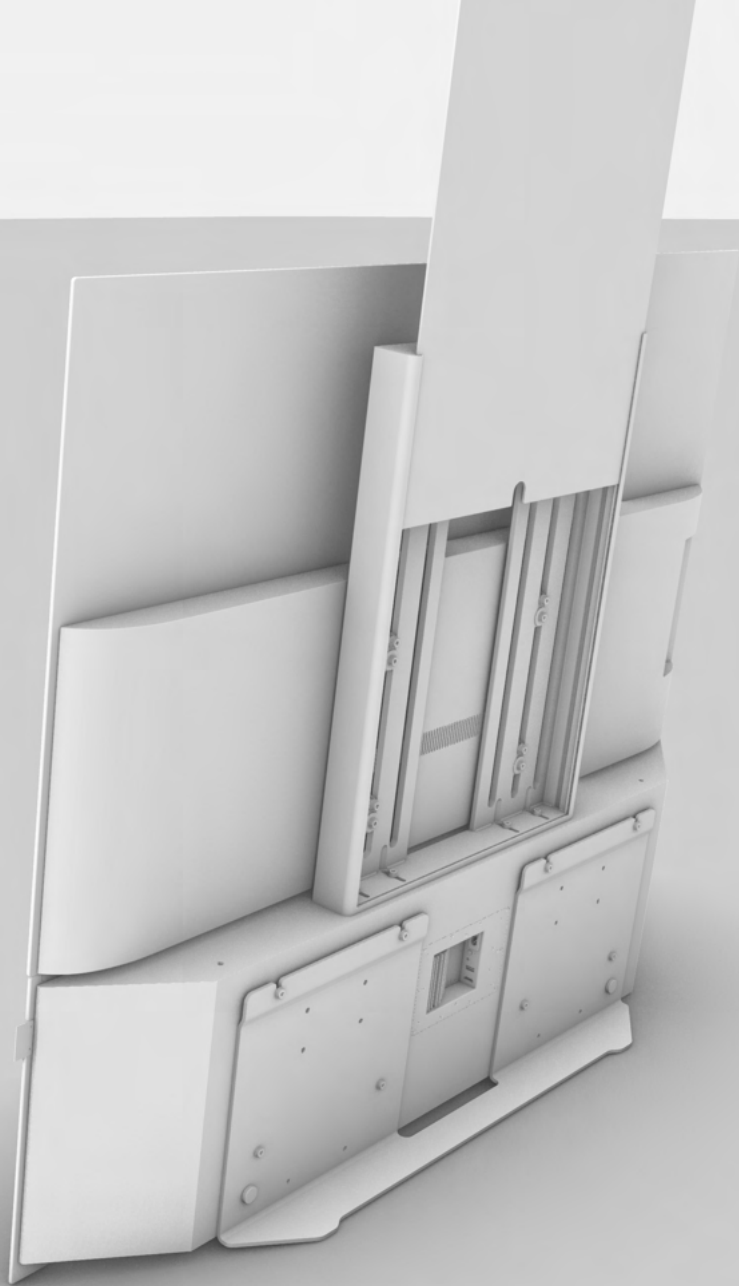
Mount speaker front grille.
It attaches firmly in place
using lots of neodymium
magnets, for easy
exchange with new colors.
Next step, fine tune
alignment between TV and
speaker front grille.



Slightly loosen the screws bolting the Universal TV mount to the speaker, just enough that the TV can slide back and forward.



Align TV and speaker to match up perfectly, and tighten the screws firmly.



Arrange all cables, and hide power strip in the cavity at the Universal TV Mount. When done, place rear cover plate.



Arrange all cables, and hide power strip in the cavity at the Universal TV Mount. When done, place rear cover plate.



Your TV is now a real HiFi sound system. Enjoy!

Setup Guide: Wall Mounted

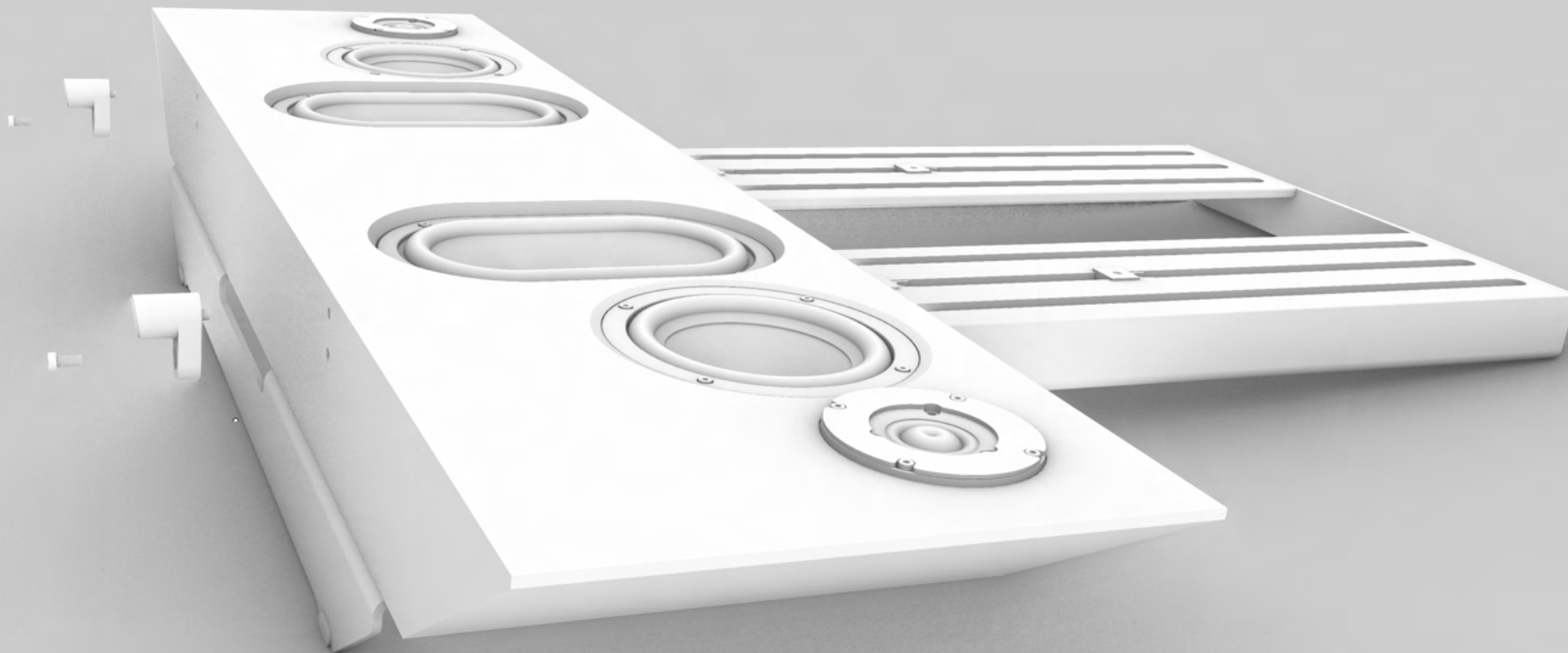


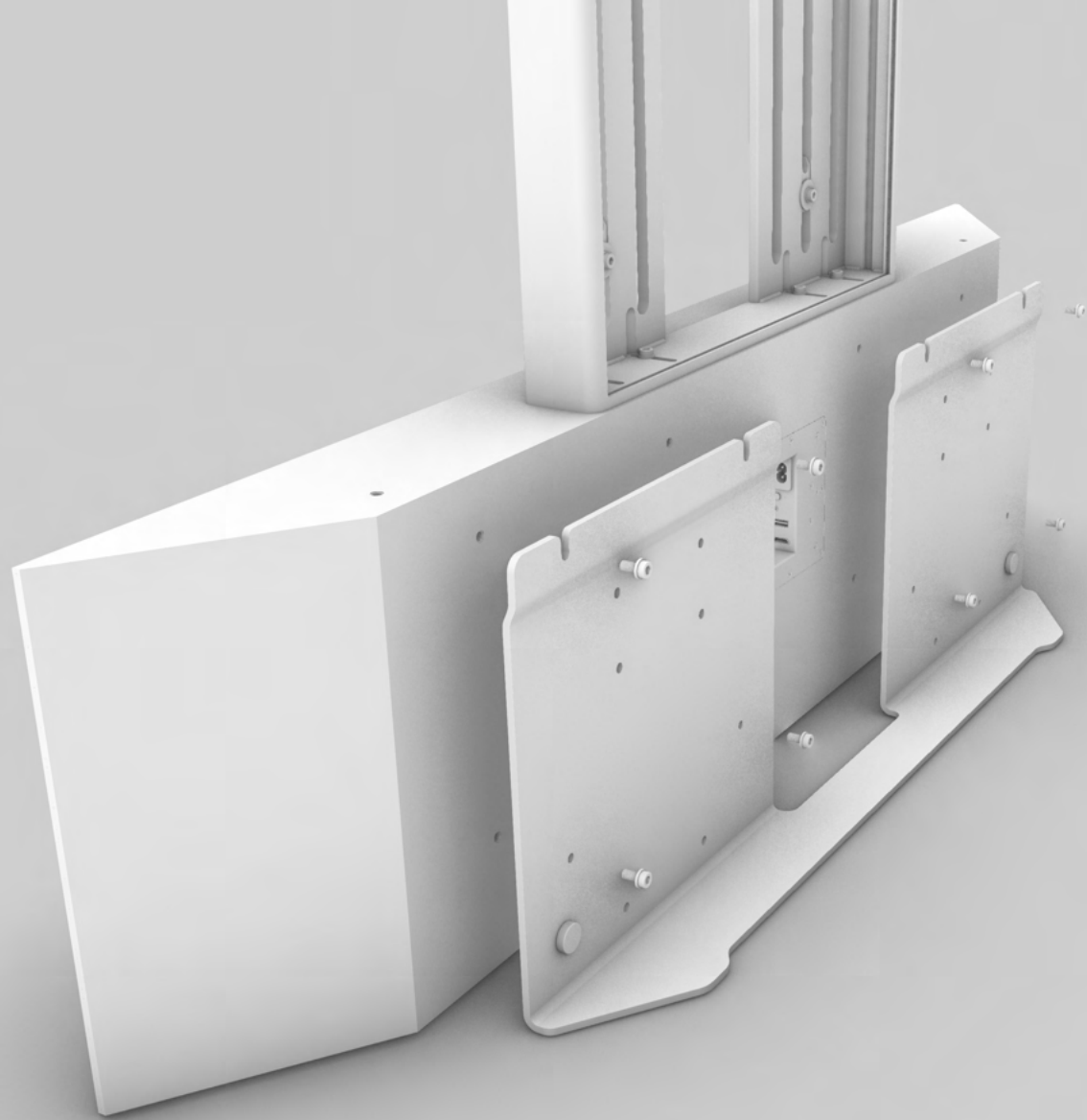
For wall mounting, follow all steps in "Setup Guide: Floor Standing". The reason being, that it's impossible to get to the screws and do adjustments once it's mounted on the wall.



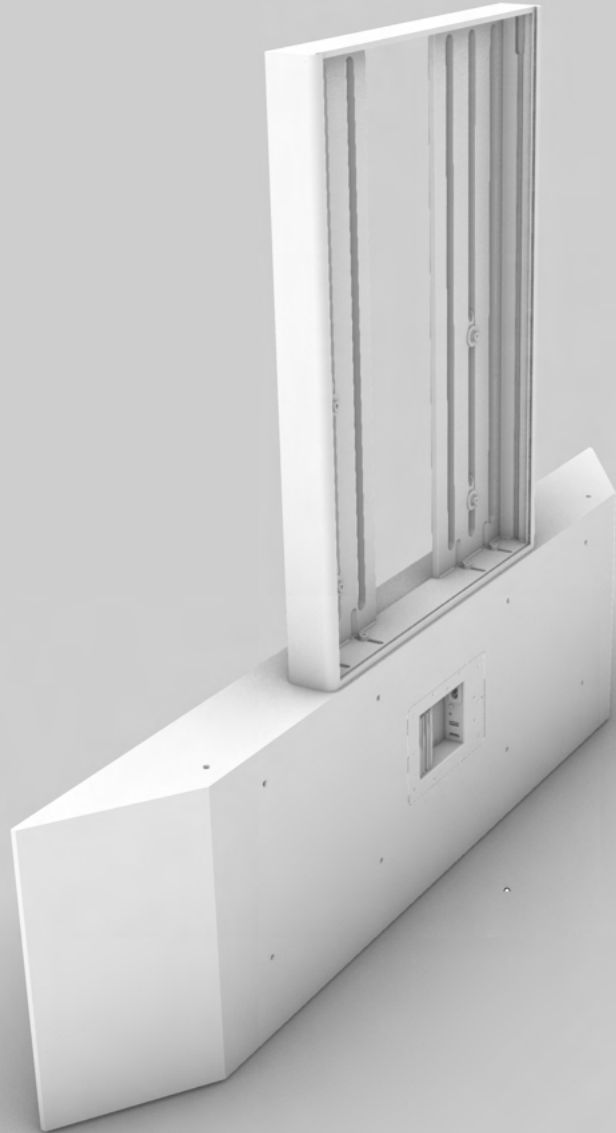
In this step, **DO NOT LOSEN ANY SCREWS**. LIFT the TV of the Universal TV mount, and remove the front grille, and back cover plate.

Lay the speaker on the back, and
remove the front feet.

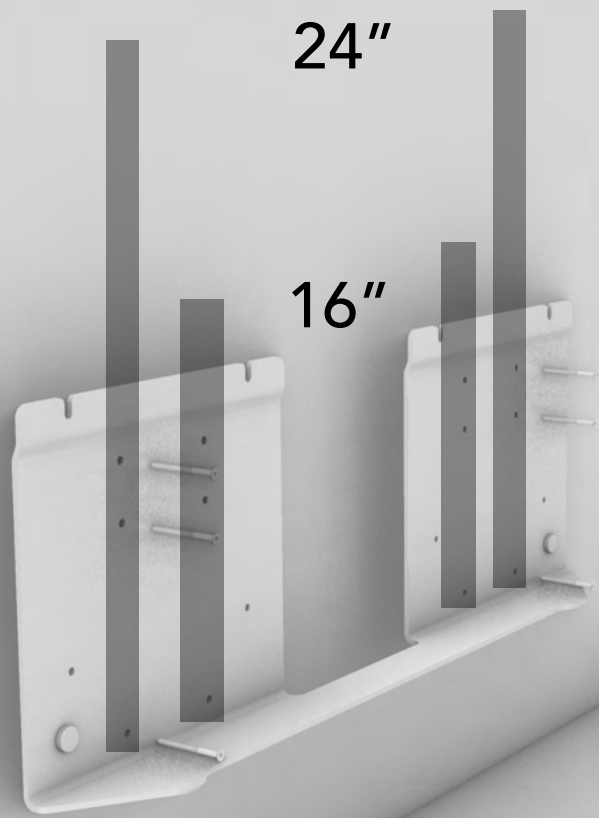




Raise the speaker up,
and remove the
Hybrid Foot / Wall
Mount.

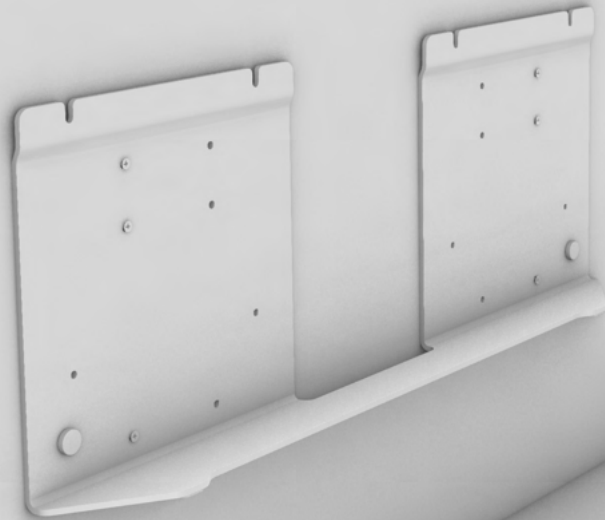


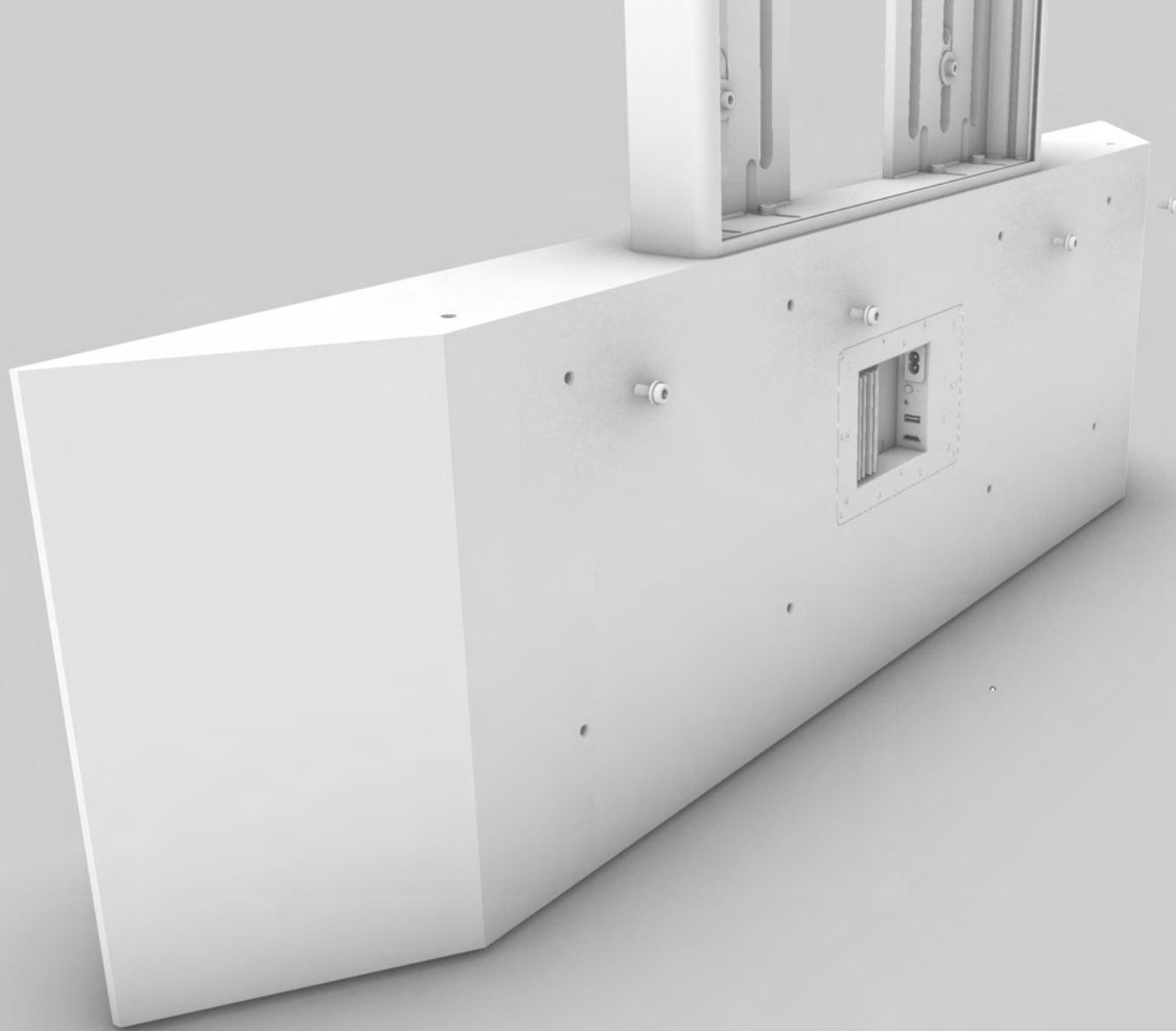
Now you are left with just the speaker, and Universal TV mount installed in the correct depth, and the "VESA pin grabbers" in the correct height.



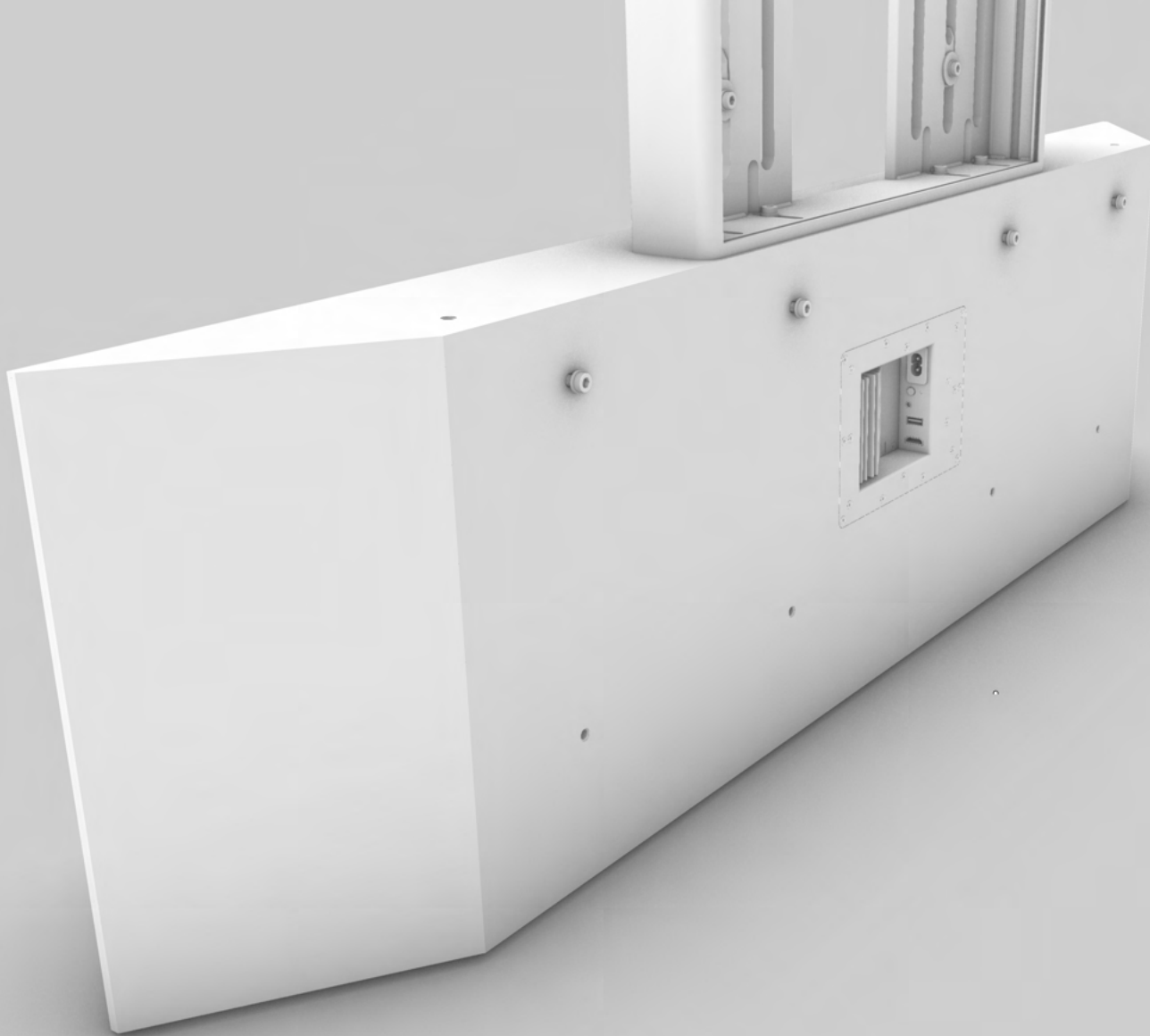
Mount the Universal Foot / Wall Mount, on the wall. There are holes for both 16" and 24" studs for american homes.

Mount the Universal Foot / Wall Mount, on the wall. There are holes for both 16" and 24" studs for american homes.





Mount 4xM6 screws in the top 4 holes on the back of the speaker. Leave enough space (around 8mm) to grab on the Hybrid Foot / Wall Mount.



Mount 4xM6 screws in the top 4 holes on the back of the speaker. Leave enough space (around 8mm) to grab on the Hybrid Foot / Wall Mount.



Lift CANVAS with the
Universal TV mount up
on the Hybrid Foot /
Wall Mount.



Lift the TV up on the Universal
TV Mount.



Mount the front grille on
CANVAS. The setup is
now complete,
congratulations, your TV
is now a real HiFi Sound
System!

CANVAS

HiFi Reinvented

User Manual



www.canvashifi.com



0045 2975 0045



hello@canvashifi.com



Maigaardsvej 2,
9900 Frederikshavn, Denmark

IMPORTANT SAFETY INFORMATION

1. Read these instructions.
2. Keep these instructions.
3. Read all warnings.
4. Follow all instructions
5. Do not use this apparatus near water.
6. Clean only with dry cloth.
7. Do not block any ventilation openings. Install in accordance with manufacturer's instructions.
8. Do not install near any heat sources such as radiators, heat registers, stoves, or other apparatus (including amplifiers) that produce heat.
9. Do not defeat the safety purpose of the polarized or grounding-type plug. A polarized plug has two blades with one wider than the other. A grounding type plug has two blades and a third grounding prong. The wide blade or the third prong are provided for your safety. If the provided plug does not fit into your outlet, consult an electrician for replacement of the obsolete outlet.
10. Protect the power cord from being walked on or pinched particularly at plugs, convenience receptacles, and the point where they exit from the apparatus.
11. Only use attachments/accessories specified by the manufacturer.
12. Use only with the cart, stand, tripod, bracked, or table specified by the manufacturer, or sold with the apparatus. When a cart is used, use caution when moving the cart/apparatus combination to avoid injury



from tip-over.

13. Unplug this apparatus during lighting storms or when unused for long periods of time.
14. Refer all servicing to qualified service personnel. Servicing is required when the apparatus has been damaged in any way, such as power-supply cord or plug is damaged, liquid has been spilled or object have fallen into the apparatus, the apparatus has been exposed to rain or moisture, does not operate normally, or has been dropped.

WARNING:

To reduce the risk of fire or electric shock, do not expose this apparatus to rain or moisture.

The apparatus shall not be exposed to dripping or splashing and that no objects filled with liquids, such as vases, shall be placed on the apparatus.

Wi-Fi setup:

1. Download and use the Canvas app for the Canvas device setup to network and Googlecast.



1. Download Google Home APP



2. Power ON audio System. Await green LED flashing (2min).
3. Open Google Home APP and follow the instructions for setup.
4. Audio System should be connected to your network and LED should be solid green when done.

Standby instructions:

Standby Mode

If your CANVAS-2 is powered on and idle, it will automatically enter standby mode.

Normal Standby:

If WIFI is not connected, the CANVAS-2 will enter normal standby after 20 minutes of no audio. To wake the speaker, click the reset button.

Power consumption in Normal Standby mode is less than 0.5W.

Network Standby: If WIFI is connected, the CANVAS-2 will enter network standby after

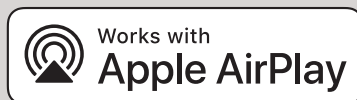
20 minutes of no audio. To wake the speaker, click the reset button or start a streaming playback.

Power consumption in Network Standby mode is less than 2W.

Wi-Fi audio playback:

AirPlay playback:

- To playback from a device supporting Apple AirPlay, you must connect your source device to the same network as your Audio system.
- From playback device, you can activate AirPlay playback by pressing below icon and choose audio system.



ChromeCast playback:

- Make sure your playback device is in same network as your audio system.
- From any ChromeCast supported APP, you can find the ChromeCast symbol, if it is in same network as your audio system. Simply press the logo and choose audio system.



Spotify Connect:

- Use your phone, tablet or computer as a remote control for Spotify. Go to www.spotify.com/connect to learn how.
- The Spotify Software is subject to third party licenses found here: www.spotify.com/connect/third-party-licenses.



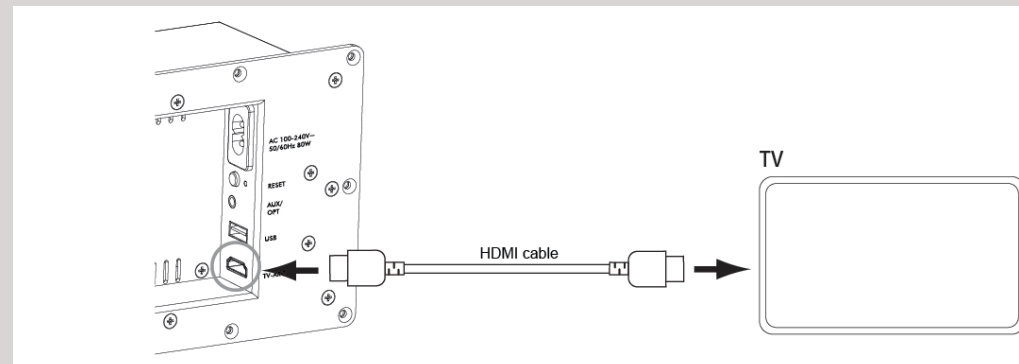
Connect your device to TIDAL

1. Play a song and tap on the 'Now playing' bar.
2. Tap on the device selector at the top right.
3. Choose a TIDAL connect-enabled device.



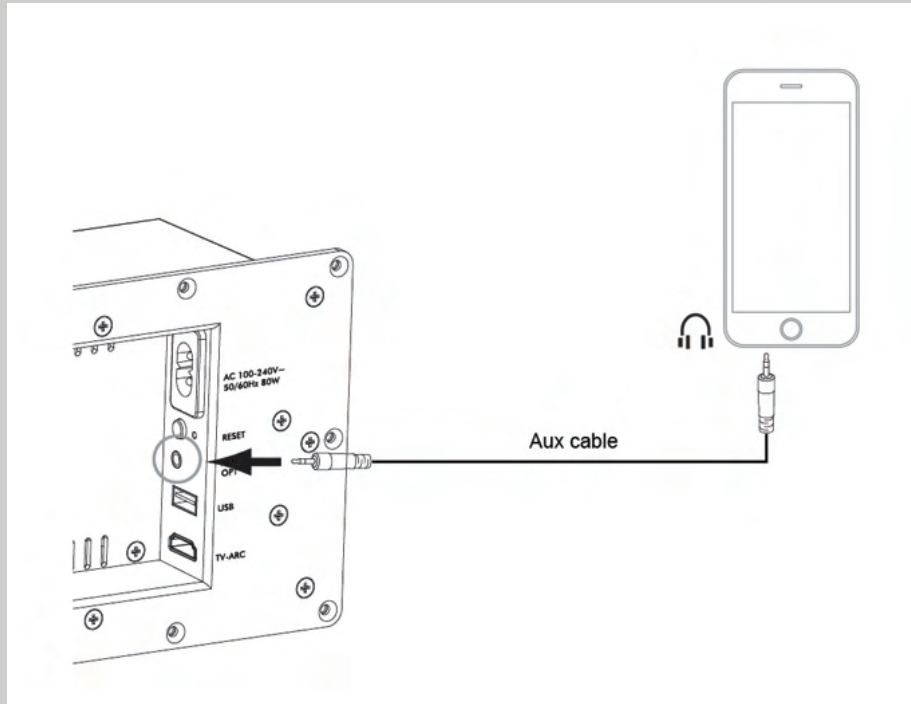
Connect Audio System with your TV using HDMI (ARC) :

1. Check that your TV has HDMI ARC (Audio Return Channel) and connect the Audio System with this input, using HDMI 1.4 or newer cable.
2. Connect mains power to your Audio System unit and power it ON.
3. Power ON your TV, enable HDMI/ARC audio input from TV side. Make sure to setup audio output to PCM.
4. Audio System will now be operated from your TV via CEC commands from TV. This will allow you to use you TV-remote to adjust volume of the Audio System and also the Audio System will power ON and OFF together with your TV.
5. If there is no audio applied for a period of 20minutes, the Audio System will go to standby automatically. When audio returns, the Audio System will automatically power ON again.



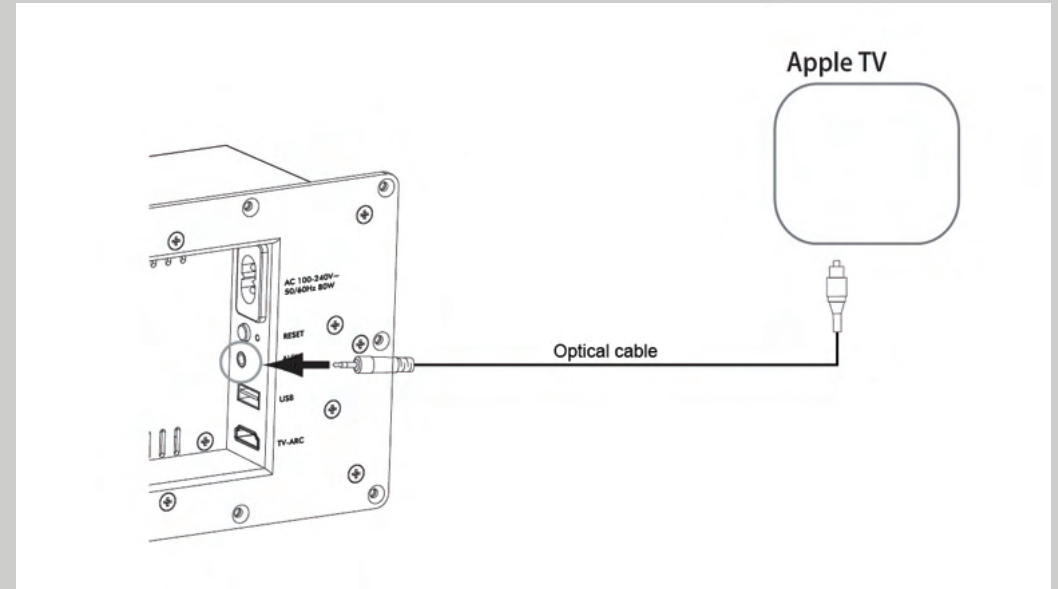
Connect Audio System with audio source or TV, using 3.5mm AUX analogue interface:

1. An audio source or TV with adjustable analogue audio output can be connected to the Audio System 3.5mm AUX input.
2. After connecting audio cable between audio source and Audio System, connect mains power to your Audio System unit and power it ON.
3. Power ON audio source. If TV's headphone output is used, make sure that the output is enabled from TV side.
4. Audio System will automatically detect the audio coming from the AUX input and playback the audio from it over the speakers. Be noted that volume must be adjusted externally for this feature.
5. If there is no audio applied for a period of 20minutes, the Audio System will go to standby automatically. When audio returns, the Audio System will automatically power ON again.
6. If volume adjustment for this input is needed, the optional remote control must be added to the system. This will also enable manual input selection.



Connect Audio System with TV or source, using 3.5mm AUX optical digital interface:

1. An audio source or TV with adjustable digital SPDIF output can be connected to the Audio System 3.5mm digital AUX input (shares same connector as the analogue AUX input). This is done using an optical cable with 3.5mm connector.
2. After connecting optical cable between audio source and Audio System, connect mains power to your Audio System unit and power it ON.
3. Power ON audio source.
4. Audio System will automatically detect the audio coming from the AUX optical input and playback the audio from it over the speakers. Be noted that volume must be adjusted externally for this feature.
5. If there is no audio applied for a period of 20minutes, the Audio System will go to standby automatically. When audio returns, the Audio System will automatically power ON again.
6. If volume adjustment for this input is needed, the optional remote control must be added to the system. This will also enable manual input selection.



Input selection

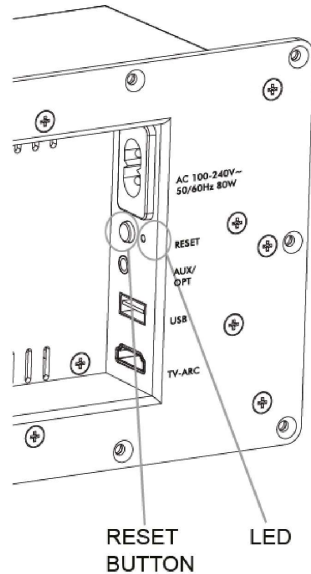
The Audio System features intelligent power management and input selection system. If any input has audio signal, it will be played by the Audio System.

If more than one input has audio signal, input will be selected by priority. Audio System will playback the input with the highest priority. Priority order is shown below:

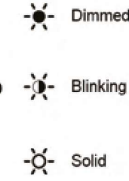
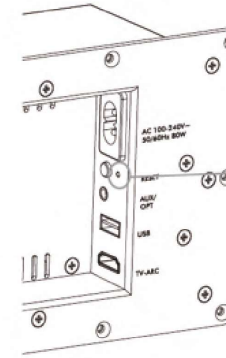
1. Wi-Fi (highest priority)
2. HDMI
3. AUX (lowest priority)

Factory default reset

The Audio System can be reset to factory default settings. This is done holding rear button pressed for 10 seconds and await LED off. After this, the Audio System will be reset and ready for new setup.



LED indications:



Green blinking	Network configuration mode
Green Solid	Network connected/Wi-Fi
Red dimmed	Standby
Red Solid	HDMI input playing
Red blinking	Firmware upgrading
Orang solid	AUX input playing
Yellow solid	ChromeCast playing
Orang solid	AUX input playing
Yellow solid	ChromeCast playing

CANVAS

HiFi Reinvented

Thank you!



www.canvashifi.com



0045 2975 0045



hello@canvashifi.com



Maigaardsvej 2,
9900 Frederikshavn, Denmark