

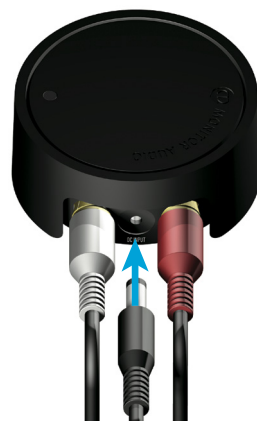
WT-1

WIRELESS TRANSMITTER

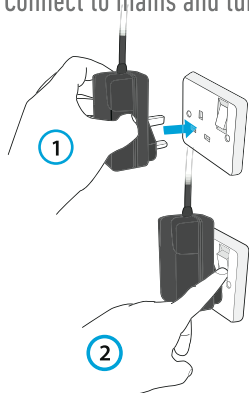
1. Connect RCA lead(s) from amp to the transmitter



2. Connect power



3. Connect to mains and turn on



4. LED indicator flashes blue until paired



5. LED turns solid blue on both devices when paired



6. If connection failed, LED will flash blue until it goes into standby.



7. If no audio signal after 20 minutes the transmitter or receiver will go into standby.



WT-1

WIRELESS TRANSMITTER

